



WHYSgiving

Buy on Purpose. Vote with Your Spending Power.

Installation Manual

Stroller Glider Board

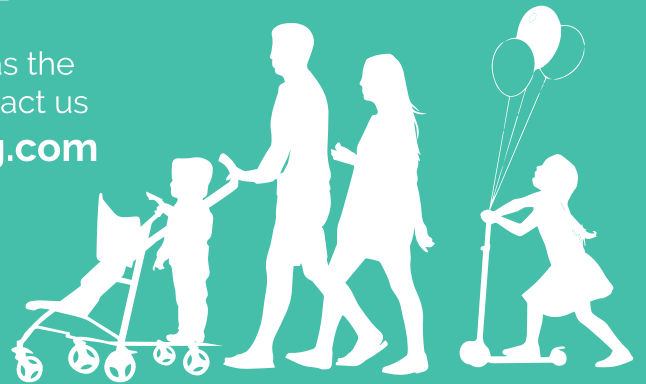
A Ride-Along Stroller Accessory



Do you have all accessory parts?

Before proceeding with installation, check if your glider has the complete parts. If there are any missing parts, please contact us right away for replacements at support@whysgiving.com

- A. (1) Glider Platform
- B. (2) Wheels
- C. (6) Rubber Rings
- D. (2) Connectors
- E. (1) Folding Belt



To view this manual online, visit us at www.whysgiving.com/glidermanual



Install Rubber Rings to Each Wheel.

There are 6 rubber rings. Insert metal pin of each wheel through 3 rubber rings as shown in **image 1**.



Install Wheels to Glider Platform

Press and hold button of wheel pin hole of the glider board. Insert metal pin of the wheel into the hole of the glider board and release button. You should hear or feel the wheel pin lock in place with the glider board. Give it a little pressure to secure it in place if necessary.



Note:

Be sure the rubber rings stay between the wheel and board as shown in **image 2**. Turn glider board over. Installed wheels are as shown in **image 3**.



3



Install Connectors to Your Stroller Frame Bar

Twist to unscrew the knobs from the (2) connectors as shown in **image 4**. Wrap plastic thread of connector around your stroller frame bar as shown in **image 5**. Twist to screw the knob, securing connector to the stroller frame bar as shown in **image 6**. Secure the second connector to the opposite side of the stroller frame bar. Prepare the glider board arms by loosening the platform bracket screws as shown in **image 7**. Loosen just enough to give the glider arms movement and not to detach them.



4





Adjusting Glider Platform Arms

The arms of the glider platform can extend horizontally to fit wider stroller frames. Push and hold button as shown in **image 8**. Extend by pushing glider arms out to desired width as shown in **image 9**. Use locking slot on the bottom of the glider platform as measurement points to obtain even adjustments for both arms as shown in **image 10**.



Install Glider Arms to the Connectors

Extend both glider arms and attach the bolt screws as shown in **image 11**. Pull and hold button of connector to open latch as shown in **image 12**. Insert the long bolt screw of glider arm into latch as shown in **image 13**. Release the button on connector allowing the latch to lock in the glider arm as shown in **image 14**.



Complete Adjustments & Installation

Adjust angles of the glider platform arms so that they are parallel, and the board is level, as shown in **image 15**. Tighten the platform bracket screws after all final adjustments.



**Congratulations.
Happy gliding!**

Folding Platform for Storing

When not in use, your glider platform can be folded up using the folding belt to secure the platform to the stroller handle as shown in **image 16**.



**Latching System
Installs in Minutes**

**Reinforced Stand Board
with Non-Stick Adhesive**

**Strong &
Durable Frame**

**Upgraded Wheels
for a Smooth Ride**



**Extra High and Wide
Clearance for Your Feet**

Glider Features

- ★ Holds Kids up to 70lbs
- ★ 2+ Years Old
- ★ Connectors fit round, square, and oval stroller frame bars up to 21 cm circumference, 7 cm wide.
- ★ No Tools Needed to Install
- ★ Compatible with 95% of Stroller Models

For a list of compatible stroller models, visit
www.whysgiving.com/glidermanual